

STA

**ST ANDREW
THE APOSTLE**

**Year 11 Information Evening
GCSE Mathematics**

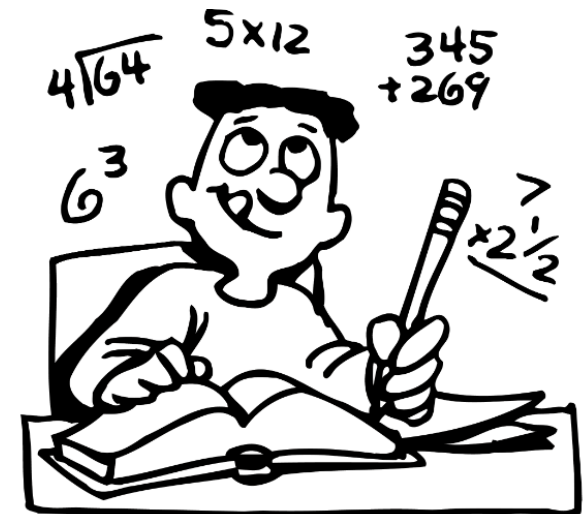
Mathematics Faculty- Information

- GCSE Maths is a two-year course studied in year 10 and 11.
- GCSE Maths is assessed at Foundation Tier (grades 1-5) OR Higher Tier (grades 4-9).
- All question papers must be taken at the same tier.
- Students are examined in all aspects of maths including number, algebra, geometry and statistics, with a focus on problem solving.
- The final exam consists of the following papers:
 - Paper 1: Non-Calculator (1.5 hours, 80 marks) - **Thursday 15 May 2025** (Morning)
 - **Half-Term holiday**
 - Paper 2: Calculator (1.5 hours, 80 marks) – **Wednesday 4 June 2025** (Morning)
 - Paper 3: Calculator (1.5 hours, 80 marks) – **Wednesday 11 June 2025** (Morning)
- **All content** could be assessed on any of the papers.

Mathematics - Mocks

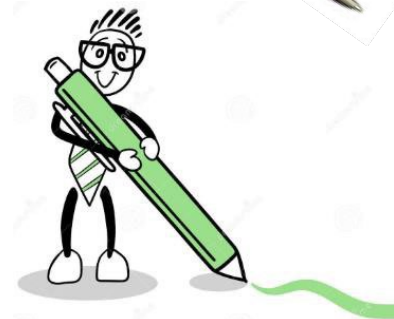
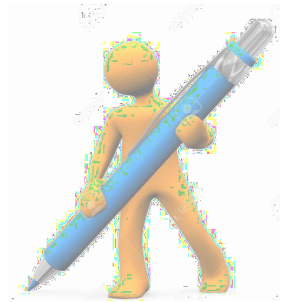
Before the main math exam, there will be two very important formal **MOCK** exams

- **Mock 1** (November 2024). Students will sit **2 papers**.
- **Mock 2** (March 2025). Students will sit **3 papers**.
- Final exam **tiers** will be determined after the results from mock exams.
- Minimum of **60%** must be achieved from the **cross-over questions** to do **higher tier**.



Essential Equipment for Maths Lessons/Exams

- Scientific Calculator
- Black ball point pen
- Pencil, sharpener and rubber
- Geometry set
- Green pen to mark work



Useful Websites

Dr Frost Maths – provides an online learning platform, teaching resources, videos and a bank of exam questions.



Corbett Maths – Maths Resources: Videos, Worksheets, 5-a-day, Revision Cards and much more.



Maths Genie - Free online GCSE video tutorials, notes, exam style questions, worksheets, answers for all topics in Foundation and Higher GCSE.



Useful Websites



Demo 11/ma1 Student
St Andrew the Apostle Greek Orthodox
School

Trophies
0/37

Points This Year
0

Mastery
0 0 0

What to work on next?

[Start a Practice](#)

[Review Progress](#)

YOUR COURSES

[Year 11 \(Higher\)](#)

My Homework

- ✘ Y11 Term 1 - Revision HW
Due 3 days from now
- ✘ Similar Shapes & Frustum
Due 3 days ago
- ✘ Surface area and Volume 3D
Due Last week

[Review All](#)

Notifications

- ✎ You have been set a task by your teacher Mr U Dogan. Click to start it.
YESTERDAY
Y11 Term 1 - Revision HW
- ✎ You have been set a task by your teacher Mr U Dogan. Click to start it.
LAST WEEK
Similar Shapes & Frustum
- ✎ You have been set a task by your teacher Mr U Dogan. Click to start it.
2 WEEKS AGO
Surface area and Volume 3D

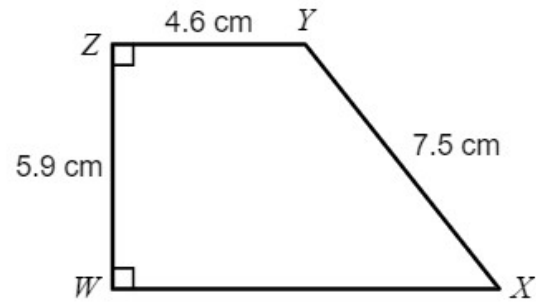
Resources

-  [Questions & Past Papers](#)
-  [Lesson Resources](#)
-  [Dr Frost Live!](#)

Q1 Q2 Q3 Q4 Q5 Q6 Q7 Q8 Q9 Q10 Q11 Q12 Q13 Q14 Q15 Q16 Q17 Q18 Q19 Q20 Q21 Q22 Q23

COMPLETION
0%

The diagram shows a trapezium $WXYZ$.



Find the length WX .
Give your answer to 2 decimal places.


cm

Submit Answer



Demo 11/ma1 Student
St Andrew the Apostle Greek Orthodox
School

 Trophies
0/37

 Points This Year
0

Mastery
 **0**  **0**  **0**

What to work on next?

[Start a Practice](#)

[Review Progress](#)

YOUR COURSES




Year 11 (Higher)

My Homework

-  Y11 Term 1 - Revision HW
Due 3 days from now
-  Similar Shapes & Frustum
Due 3 days ago
-  Surface area and Volume 3D
Due Last week

[Review All](#)

Notifications

-  You have been set a task by your teacher Mr U Dogan. Click to start it.
YESTERDAY
Y11 Term 1 - Revision HW
-  You have been set a task by your teacher Mr U Dogan. Click to start it.
LAST WEEK
Similar Shapes & Frustum
-  You have been set a task by your teacher Mr U Dogan. Click to start it.
2 WEEKS AGO
Surface area and Volume 3D

Resources

-  Questions & Past Papers
-  Lesson Resources
-  Dr Frost Live!

Dr Frost Maths – 19 Units



Courses → Schools → St Andrew the Apostle Greek Orthodox School

Year 11 (Higher)

Unit 1 - Number

- 1a Calculations, checking and rounding
- 1b Indices, roots, reciprocals
- 1c Factors, multiples, primes

Unit 2 - Algebra

- 2a Setting up, rearranging and solving equations
- 2b Sequences

Unit 3 - Data

- 3a Averages and range
- 3b Representing and interpreting data

Unit 4 - Fractions and proportion

- 4a Fractions and percentages
- 4b Ratio and proportion

Unit 5 - Angles and right-angled triangles

- 5a Polygons, angles and parallel lines
- 5b Pythagoras's Theorem and trigonometry

Unit 6 - Graphs

- 6a Basics and real-life graphs
- 6b Linear graphs and coordinate geometry
- 6c Quadratic, cubic and other graphs

Unit 7 - Area and volume

- 7a Perimeter, area and circles
- 7b 3D shapes
- 7c Accuracy and bounds

Unit 8 - Transformations and construction

- 8a Transformations
- 8b Constructions, loci and bearings

Unit 9 - Quadratics 1

- 9a Quadratics and simultaneous equations
- 9b Inequalities



St Andrew the Apostle Greek Orthodox School → Year 11 (Higher) → Unit 2 - Algebra →

2a Setting up, rearranging and solving equations

2a Setting up, rearranging and solving equations

12 skills

2b Sequences

6 skills



136 Basic substitution with positive integers (limited to addition, subtraction, division and multiplication)

Mastery: 0/100

Practise

OR NARROW DOWN

VIDEO

DIFFICULTY

RECENT ACCURACY

- | | | | | |
|--------------------------|---|-------------------------|--|-----|
| <input type="checkbox"/> | 136: Exam Practice: Basic substitution with positive integers (limited to addition, subtraction, division and multiplication) | Example | | 1-4 |
| <input type="checkbox"/> | 136a: Substitute positive integers into expressions with one variable (single operation). | Example | | 1 |
| <input type="checkbox"/> | 136b: Substitute positive integers into expressions with one variable (single operation plus constant). | Example | | 1 |
| <input type="checkbox"/> | 136c: Substitute positive integers into simple expressions with more than one variable. | Example | | 2 |
| <input type="checkbox"/> | 136d: Substitute positive integers into a simple worded formula. | Example | | 2 |
| <input type="checkbox"/> | 136e: Determine the value of a variable given an equation and the value of one variable within it. | Example | | 3 |



191 Multiplying single algebraic terms (no index laws)

Mastery: 0/100

Practise

Dr Frost Maths – 19 Units

136a: Substitute positive integers into expressions with one variable (single operation).



Key Skill - Substitution with one variable (single operation).

Share

KS

SUBSTITUTION WITH ONE VARIABLE (SINGLE OPERATION)

Ⓐ Calculate $3x$ when $x=2$.

$$3x$$



Ⓑ Work out $\frac{8}{y}$ when $y=4$

Ⓒ Determine z^2 when $z=5$.

Watch on YouTube

Dr Frost Maths – 19 Units

← St Andrew the Apostle Greek Orthodox School → Year 11 (Higher) → Unit 2 - Algebra →
2a Setting up, rearranging and solving equations

2a Setting up, rearranging and solving equations
12 skills


2b Sequences
6 skills

136 Basic substitution with positive integers (limited to addition, subtraction, division and multiplication)

Mastery: 0/100

Practise

OR NARROW DOWN

		VIDEO	DIFFICULTY	RECENT ACCURACY
<input type="checkbox"/>	136: Exam Practice: Basic substitution with positive integers (limited to addition, subtraction, division and multiplication)	Example		1-4
<input type="checkbox"/>	136a: Substitute positive integers into expressions with one variable (single operation).	Example		1
<input type="checkbox"/>	136b: Substitute positive integers into expressions with one variable (single operation plus constant).	Example		1
<input type="checkbox"/>	136c: Substitute positive integers into simple expressions with more than one variable.	Example		2
<input type="checkbox"/>	136d: Substitute positive integers into a simple worded formula.	Example		2
<input type="checkbox"/>	136e: Determine the value of a variable given an equation and the value of one variable within it.	Example		3

191 Multiplying single algebraic terms (no index laws)

Mastery: 0/100

Practise

Question Level Analysis - QLA

Year 11 Mock Exam Assessment Feedback (H tier Nov 2023)
GCSE Mathematics Higher Tier

Name Sample Student
Class 13D

Paper 1	Question Title	Score	Dr Frost
1	Expand and simplify an expression	1 / 2	K83d
2a	Identify correlation	1 / 1	K135b
2b	Draw a line of best fit	1 / 1	K135c
2c	State why the line of fit may not be suitable for a given value	0 / 1	K135c
3	Word problem involving fractions, ratio and percentage	5 / 5	K101a, 106a & 110a
4a	Sketch the plan view of a prism	0 / 2	K249a
4b	Sketch a prism	2 / 2	
5	Word problem involving pressure	3 / 3	K232a-c
6a	Write a number given as an ordinary number in standard form	1 / 1	K212a
6b	Write a number given in standard form as an ordinary number	1 / 1	K213a
6c	Multiply two numbers given in standard form	1 / 2	K215a
7	Word problem involving the perimeters and areas of a square and a trapezium	0 / 4	K69b & K146a
8a	Estimate an expression involving squares and roots	1 / 2	K123a & b
8b	Decide if the estimation in part a is an underestimate or an overestimate	1 / 1	
9	Word problem involving percentage	0 / 3	K113b
10a	Draw a box plot	2 / 3	K136a
10b	Compare two box plots	1 / 2	E136
11	Word problem involving division and subtraction	4 / 4	K198c & g
12	Simplify an expression involving surds	3 / 3	K314a,b,e,f
13	Problem involving the quadratic equation	1 / 1	K267a
14	Word problem involving probability	1 / 3	K259c
15	Change the subject of a formula	3 / 4	K186c,d,f
16	Problem involving ratio and equations	1 / 4	
17	Problem involving circle theorems	2 / 4	K306a-e
18	Factorise an expression	1 / 2	K196a
19	Simplify an expression given as a power	4 / 4	K207b
20a	Sketch a sine graph	1 / 1	K284b
20bi	Find a value from a cosine graph	0 / 1	
20bii	Problem involving vectors	0 / 1	
21	Complete the square for a quadratic (a≠1)	2 / 3	E312
22a	Find the turning point of the quadratic in part a	3 / 3	
22b	Geometric reasoning involving a circle and a straight line	0 / 1	K271a & b
23	Equation of a line meeting a circle	0 / 5	E328
Total		47 / 80	

Paper 2	Question Title	Score	Dr Frost
1	Find the HCF of two numbers	0 / 3	K115c
2a	Simplify an expression involving indices	1 / 1	K206a
2b	Simplify an expression involving indices	2 / 2	K206d
3a	Word problem involving different currencies	4 / 4	K91a & b
3b	Explain how a change to the given conditions would affect the answer to part a	1 / 1	
4a	Translate a shape by a vector	2 / 2	K168a
4b	Describe a transformation	2 / 2	K235b
5	Describe what is wrong with a given frequency polygon	1 / 2	E138
6	Word problem involving rectangles, area, perimeter and percentages	3 / 3	K112a
7	Problem involving ratio and equations	0 / 2	K107a
8	Find the area of a circle given a triangle inscribed in the circle	1 / 4	K228a K114a
9a	Work out the gradient of a line	0 / 2	K189b
9b	Describe what the gradient in part a represents	1 / 1	
10a	Complete a cumulative frequency table	1 / 1	K257b
10b	Draw a cumulative frequency curve	2 / 2	K257b
10c	Estimate the median from a cumulative frequency curve	1 / 1	K257c
10d	Find a probability from a cumulative frequency curve	2 / 2	K257e
11	Word problem involving percentages	2 / 2	E210
12	Expand an expression involving three sets of brackets	2 / 3	K180b
13a	Identify a graph	1 / 1	K281a
13b	Identify a graph	0 / 1	K281a
13c	Identify a graph	0 / 1	K281a
14	Prove that two triangles are congruent	0 / 3	E301
15a	Find the value of a function	1 / 1	K274a
15b	Find the inverse of a function	2 / 2	K277a
16	Word problem involving probability	3 / 3	K259c
17	Problem involving right angled triangles and trigonometry	0 / 2	K241b K184a
18	Find an expression for the nth term of a quadratic sequence	3 / 3	K199a
19	Question involving bounds	3 / 4	K216c,b K218d
20	Find the area of a segment of a circle	5 / 5	K241b K304a
21	Sine rule and Cosine rule	5 / 5	K302 K303
22	Problem involving similar shapes	1 / 5	K245a-e
23	Solve a quadratic inequality	1 / 4	K292a & b
Total		53 / 80	

Question Level Analysis - QLA

Parent Feedback (Higher tier Nov 2023)

Year

Student Name Sample Student

Class 13D

	Score		Dr Frost
	1	/ 2	K83d
	1	/ 1	K135b
	1	/ 1	K135c
for a given value	0	/ 1	K135c
percentage	5	/ 5	K101a, 106a & 110a
	0	/ 2	K249a
	2	/ 2	
	3	/ 3	K232a-c
in standard form	1	/ 1	K212a
in ordinary number	1	/ 1	K213a
m	1	/ 2	K215a
of areas of a square	0	/ 4	K69b & K146a
and roots	1	/ 2	K123a & b
estimate or an	1	/ 1	

Paper 2	Question Title
1	Find the HCF of two numbers
2a	Simplify an expression involving indices
2b	Simplify an expression involving indices
3a	Word problem involving different currencies
3b	Explain how a change to the given conditions affects the result
4a	Translate a shape by a vector
4b	Describe a transformation
5	Describe what is wrong with a given frequency table
6	Word problem involving rectangles, area and perimeter
7	Problem involving ratio and equations
8	Find the area of a circle given a triangle
9a	Work out the gradient of a line
9b	Describe what the gradient in part a represents
10a	Complete a cumulative frequency table

Question Level Analysis - QLA

Menu 



Demo 11/ma1 Student
St Andrew the Apostle Greek Orthodox
School

 Trophies
2/37

 Points This Year
41

Mastery
 0 1 0

What to work on next?

[Start a Practice](#)




 37 Rounding a number to nearest 10, 100, 1000 and beyond

[Review Progress](#)

YOUR COURSES

[Year 11 \(Higher\)](#)

My Homework







-  Y11 Term 1 - Revision HW
Due 3 days from now
-  Similar Shapes & Frustum
Due 3 days ago
-  Surface area and Volume 3D
Due Last week

[Review All](#)

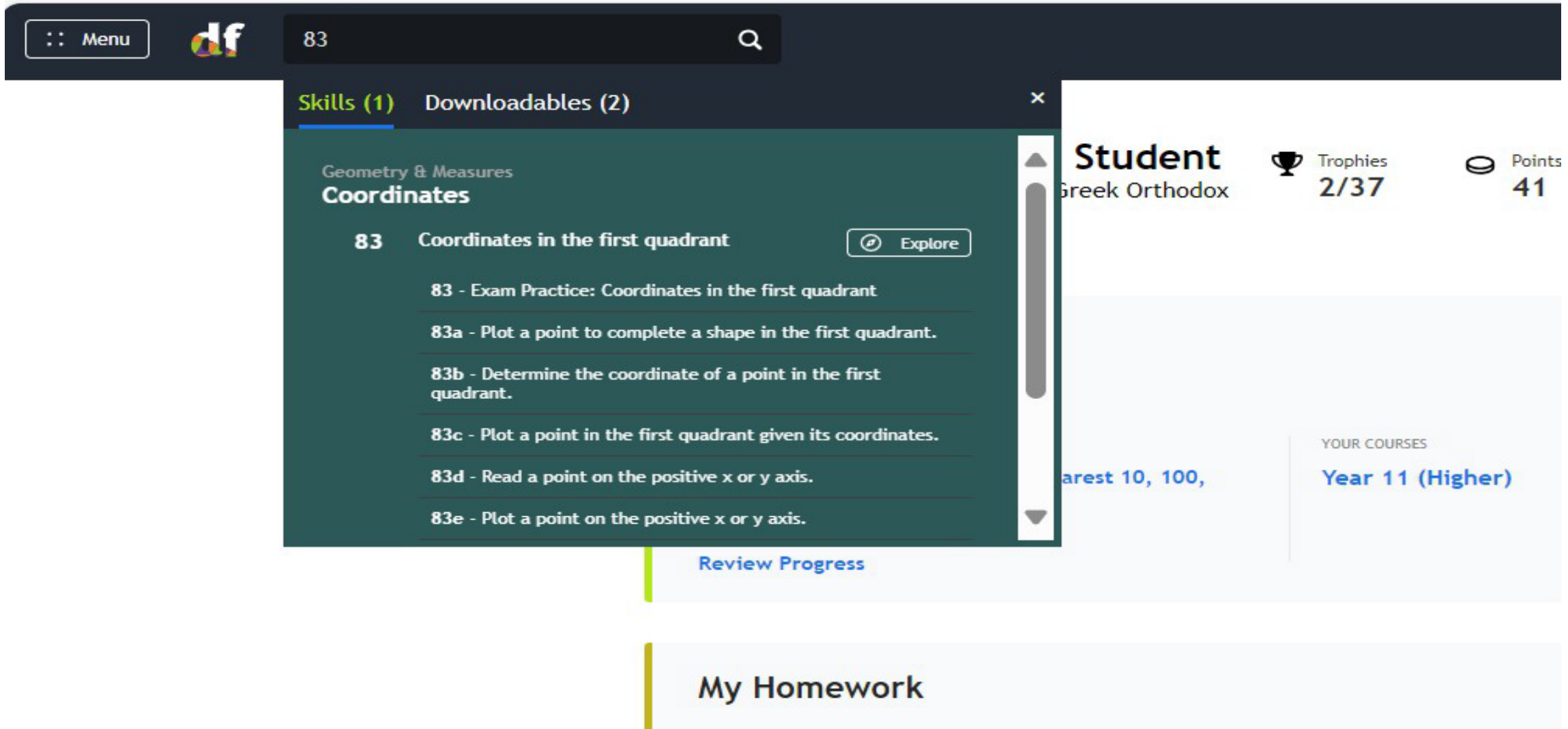
Resources

 [Questions & Past Papers](#)

Notifications

-  You earned a silver trophy: **The Cucumber of Consistency**
17 MINUTES AGO
Answer 10 questions correctly in a row.
-  You completed an independent practice and achieved **100%**
17 MINUTES AGO
37 Rounding a number to nearest 10, 100, 1000 and beyond
-  You earned a bronze trophy: **You're the Key (Skill) to my Heart**
18 MINUTES AGO
Correctly answer any Key Skill question.
-  You have been set a task by your teacher Mr U Dogan. Click to start it.
YESTERDAY
Y11 Term 1 - Revision HW
-  You have been set a task by your teacher Mr U Dogan. Click to start it.
LAST WEEK
Similar Shapes & Frustum
-  You have been set a task by your teacher Mr U

Question Level Analysis - QLA



The screenshot displays a user interface for a learning management system. At the top, there is a dark navigation bar with a 'Menu' button, a logo, and a search bar containing the number '83'. Below this, a sidebar on the left shows a tree view with 'Skills (1)' and 'Downloadables (2)'. Under 'Skills (1)', 'Geometry & Measures' is expanded to show 'Coordinates'. The main content area is titled '83 Coordinates in the first quadrant' and includes an 'Explore' button. Below the title, a list of questions is shown: '83 - Exam Practice: Coordinates in the first quadrant', '83a - Plot a point to complete a shape in the first quadrant.', '83b - Determine the coordinate of a point in the first quadrant.', '83c - Plot a point in the first quadrant given its coordinates.', '83d - Read a point on the positive x or y axis.', and '83e - Plot a point on the positive x or y axis.'. To the right of the sidebar, a 'Student' profile is visible, showing 'Greek Orthodox', 'Trophies 2/37', and 'Points 41'. Below the student profile, there is a section for 'YOUR COURSES' with 'Year 11 (Higher)' listed. At the bottom of the page, there is a 'My Homework' section and a 'Review Progress' link.

Question Level Analysis - QLA









Coordinates

83 Coordinates in the first quadrant

Mastery: 0/100

OR NARROW DOWN

VIDEO DIFFICULTY RECENT ACCURACY

<input type="checkbox"/> 83: Exam Practice: Coordinates in the first quadrant	Example		1-4
<input type="checkbox"/> 83a: Plot a point to complete a shape in the first quadrant.	Example		1
<input type="checkbox"/> 83b: Determine the coordinate of a point in the first quadrant.	Example		1
<input type="checkbox"/> 83c: Plot a point in the first quadrant given its coordinates.	Example		1
<input type="checkbox"/> 83d: Read a point on the positive x or y axis.	Example		1
<input type="checkbox"/> 83e: Plot a point on the positive x or y axis.	Example		1
<input type="checkbox"/> 83f: Use a scale to find the distance between two points with the same x - or y -coordinate in the first quadrant.	Example		3
<input type="checkbox"/> 83g: Use a scale to find the horizontal or vertical distance between any two points in the first quadrant.	Example		4

How you can support your child

- A **quiet space** to work and a regular routine for completing homework are highly recommended.
- Access to a **scientific calculator** is essential to make sure students get used to using their own.
- Regular **revision and practice** of key skills will help to achieve better confidence and recall in exams.
- **Avoid distractions** such as phones while studying. Take it away!

